





General

Introduction	Elite Ski Selection	05
	The R&D Process	06
Construction	What's inside our skis?	09
Atomic Pro Center Ski Picking	Base	10
	Grinds	11
	Adjustment	12

Nordic Ski

Redster S9 Gen S	16
Redster S9 Carbon	18
Redster C9 Carbon	20
Redster DP	22
Redster C9 Skintec	23
Redster S9 Carbon JR	24
Redster C9 Carbon JR	25

Weight Recommendation

Classic & Skate	29
-----------------	----

Nordic Boots

Redster C9 Carbon	30
Redster SC9 Carbon	32
Redster S9 Carbon	34
Redster SC9 JR	35

Nordic Bindings

Prolink Shift Race	38
Prolink Shift JR	39

Nordic Equipment

Bags	40
Overboot	42
Skifix	42
Poles	42

Athletes

The Atomic Family	44
-------------------	----

Contents

Season
25/26



Elite ski selection, straight from the source

Experience World Cup-level precision with custom ski selection at the Atomic Pro Center in Altenmarkt – the very place where our skis are crafted. Handpicked from the same pool as elite athletes, your skis are chosen by the same experts, using identical grinds and processes trusted by World Cup skiers like Simen Krüger or Victoria Carl. Selection goes beyond weight, factoring in skier type (sprinter or distance), personal preferences, and the snow conditions where you race – whether in Central Europe, Scandinavia, Asia or North America. Every detail is considered to deliver unmatched performance on every course.



Innovation in every detail: the R&D process

At the heart of every ski in our racing lineup is a research and development process designed to deliver cutting-edge performance on the track. From concept to World Cup podiums, here's how we turn ideas into skis trusted by some of the fastest athletes in the world:

Concept Development

Our R&D team is constantly pushing the boundaries of ski innovation. New concepts come from their own expertise, research, and creativity—but also from valuable feedback and insights shared by our athletes. Whether it's an idea sparked by a racer's comment or a brand-new material, it all starts here.



Precision Engineering

Once a concept is defined, our engineers craft prototypes. Every layer of the ski—from the core to the base finish—is fine-tuned for speed, power, and durability.

Rigorous Testing & Athlete Validation

Prototypes are pushed to their limits in lab simulations and on-snow trials. Our R&D team, race managers, and athletes test the skis in a variety of conditions, providing detailed feedback that drives precise refinements.

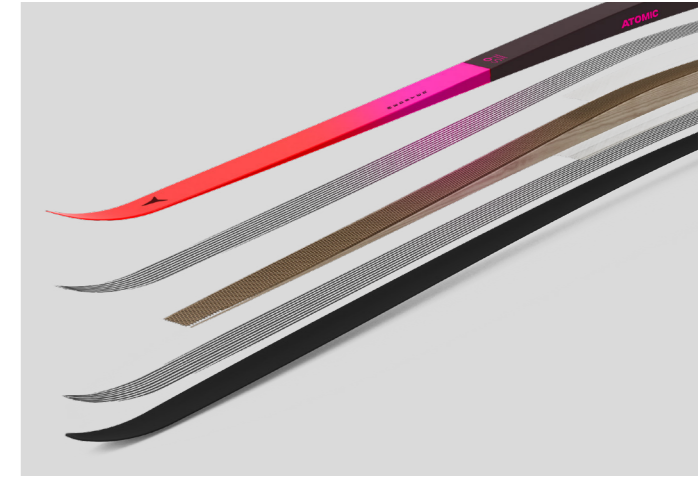
Continuous Innovation

The process doesn't stop after production. Each season brings fresh insights from athletes and races, fueling the next generation of ski technology.





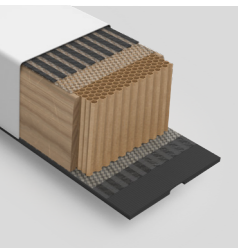
What's inside our skis?



Constructions →

Race Carbon Construction

In our Race Carbon Construction, we've added a carbon laminate above and below the core. This gives you extra control and stability at speed. It also creates a stronger rebound for a more powerful and efficient kick.



Cores →

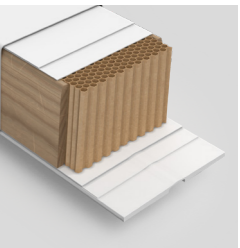
Innowave Core

Innowave is our revolutionary race core that's both strong and light in one. Engineered at our Altenmarkt HQ from lightweight resin-stiffened paper, its corrugated layers generate exceptional torsional rigidity – for a dynamic rebound when you put the power down.



Nomex Core

Inspired by aerospace technology, Nomex is the ultralight honeycomb structure at the core of our Gen S skis. The honeycomb construction is resilient, lively and generates maximum rebound to help racers push their limits.





Main selection criteria

Ski selection for athletes is based on many factors, such as base, construction/adjustment, and the grind best suited for the ski type. These variables are crucial for ensuring the skis are perfectly matched to different conditions, providing the athlete with optimal speed and efficiency on the snow.

Base

Bases vary in material composition depending on snow conditions, ensuring optimal performance.

BI 6000 black (Nr. 9)
used in universal conditions

BI 6000 black (Nr. 36)
used in cold conditions



BI 6000 white base (Nr. 126)
used in wet/warm conditions



Race Base information

	Black	White
Sintered	▪	▪
Graphite	▪	
First Waxing	Normal Wax	Normal Wax
Grind	Universal	Plus
Application Area	Xtra-Cold to Uni-Cold	Universal to Warm
Benefit	Better Wax Absorption	Higher Dirt Resistance

Grinds

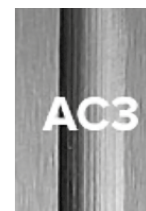
Grinds are patterns applied to the ski base that affect glide and speed, tailored to specific snow conditions. These World Cup-proven grinds, used by elite athletes globally, ensure the best possible performance and speed in varying conditions.



Grinding for different temperatures and snow conditions

Cold

Structure	CL	SK	Snow Temp	Range of Use
Atomic Cold AC3	▪	▪	-17° to -8°	cold and dry snow



Med

Structure	CL	SK	Snow Temp	Range of Use
Atomic Med AM 8	▪	▪	-10° to -1°	universal to warm



Wet

Structure	CL	SK	Snow Temp	Range of Use
Atomic Wet AW 9	▪	▪	-2° to 0°	wet coarse-grained snow (spring snow) + manual structure





Precision tailored adjustment for every snow condition

A thin layer of water naturally forms between the ski and the snow. How this water interacts with the base is key to speed and control. The right ski adjustment ensures optimal pressure distribution for maximum performance in different conditions.



Warm Power Curve

In warm, wet conditions, breaking the water film is crucial for speed. This requires shorter, more concentrated contact zones to reduce suction and maintain glide.

→ **Shorter contact zones for maximum speed in soft and wet snow conditions.** For classic skiing, this means an ideal setup for klister and soft kick wax.

Universal Power Curve

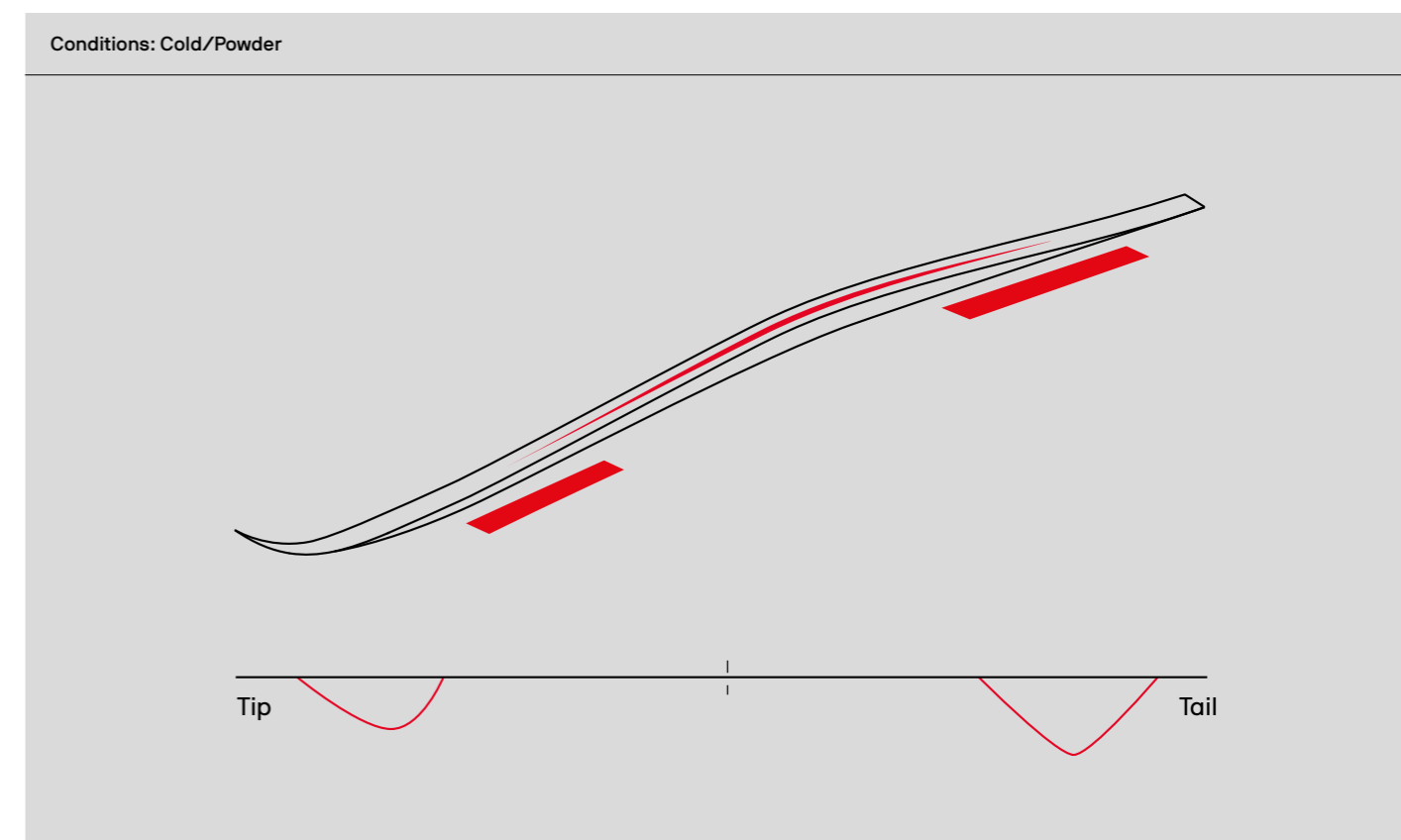
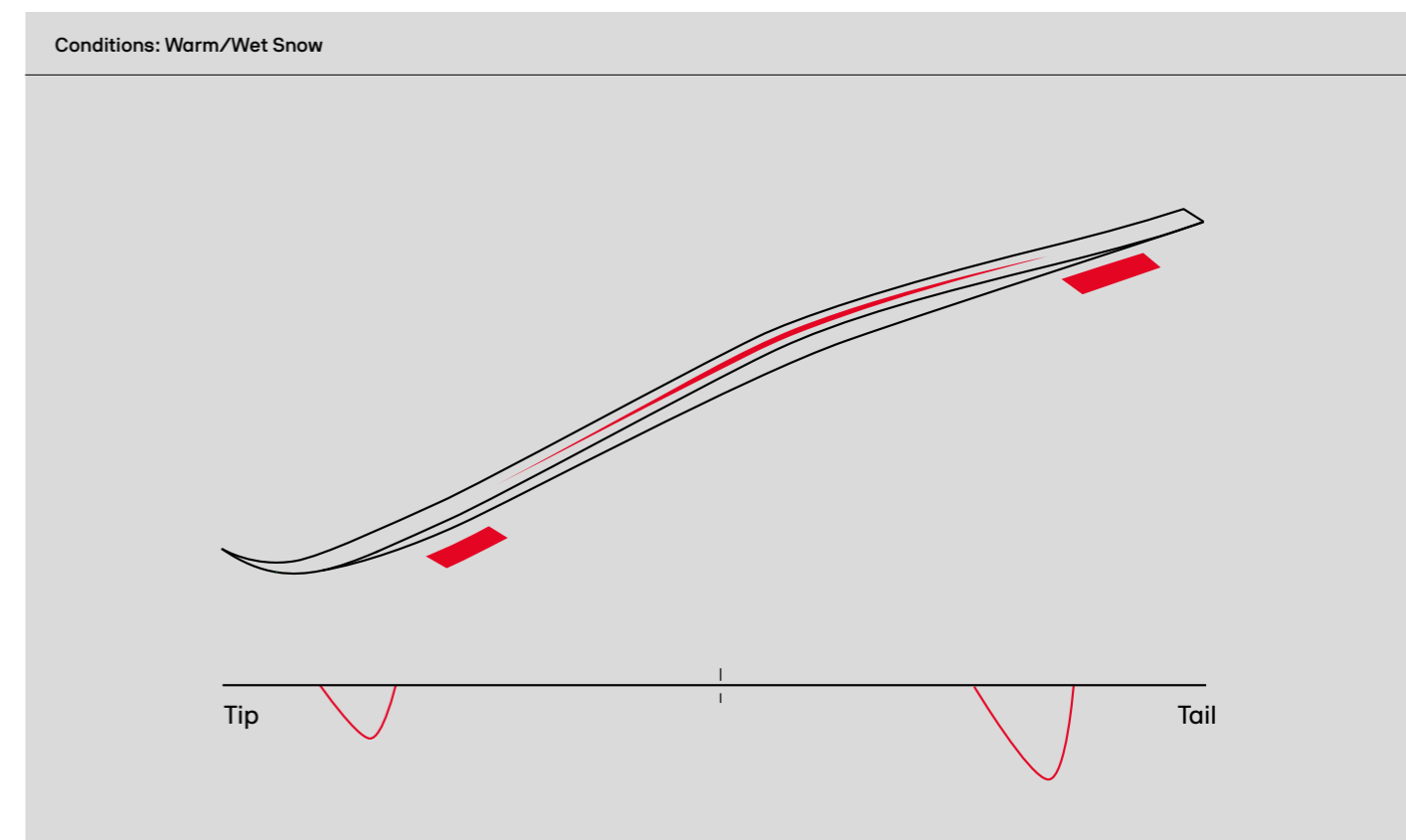
The best of both worlds. This balanced design is optimized to perform in both warm and cold conditions, ensuring versatility across a wide range of snow types.

→ **A mix of longer and shorter contact zones for all-around performance in changing conditions.**

Cold Power Curve

In cold conditions, the water film is essential for glide. To generate and maintain it, the ski needs longer, flatter contact zones that create the right amount of friction.

→ **Longer contact zones for maximum speed in hard and cold snow conditions.** For classic skiing, this setup provides ideal grip when using hard wax.





Redster S9 Gen S

Where stability meets speed

Gen S skis come with a unique wider tip and tail for epic stability and control at top speed.

Agility in every turn

The shorter body makes Gen S skis super agile, delivering a competitive advantage in turns and transitions.

Effortless strides, efficient skiing

The Gen S features work in unison to deliver a powerful push, longer strides and unmatched stride efficiency.

Key Technologies

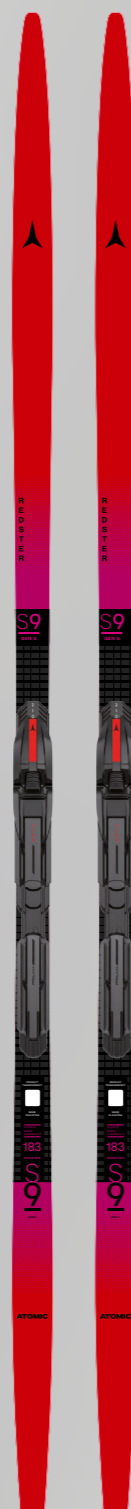
Gen S, Racewall, Race Carbon Construction

What's new?

A newly designed race tip and tail ensure precise handling on the track, while an updated camber adjustment delivers a powerful rebound – all at 5-10% less weight than the previous version.

Good to know

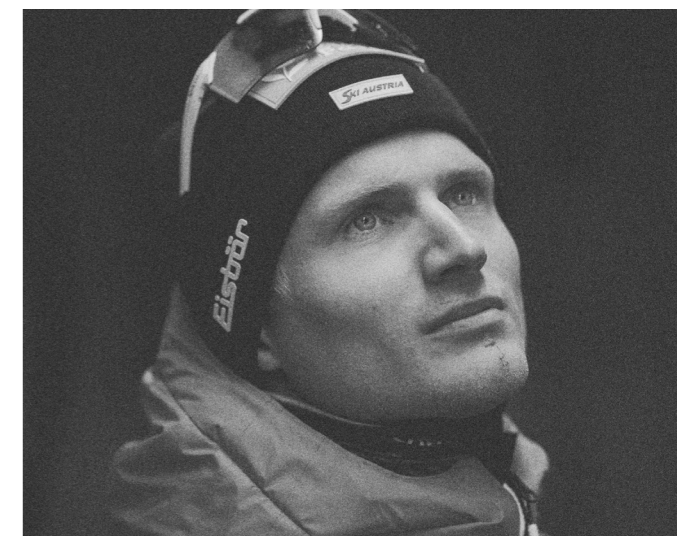
The Gen S outperforms traditional sidecut skis on certain race days due to its unique construction: wider tip and tail, shorter body, and specific ski adjustment. In hard-packed, fast conditions, the sidecut provides grip as soon as the ski hits the edge, making it extra energy-saving and efficient. On tough racecourses with lots of turns, the construction offers extra agility, security and a more playful feel, plus more power transmission into each transition.



Athlete:

"Because of the sidecut, all the energy you push into the ski is transformed into speed. You never lose your ski tips to the side at the end of a push. All of this combined with the agility in downhill with the skis being shorter, skate skiing is not only different with the Redster Gen S, it is better!"

Mika Vermeulen



Weight Recommendation

Redster Skate	KG	LBS	KG	LBS
Redster S9 Gen S	173		183	
ABSS00648 med + Shift RC SK	50 – 65	110 – 143	65 – 80	143 – 176
ABSS00650 hard + Shift RC SK	65 – 80	143 – 176	80 – 100	176 – 220

Tech Specs

Product	Art. No.	Binding	Sizes (cm)	Weight (single pc./ Size)	Side cut (mm)	Constr.	Base	Core	Features	Price
Redster S9 Gen S	ABSS00650 hard ABSS00648 med	Prolink Shift Race SK	173, 183 173, 183	525g/ 183cm	47/40/47	Speedline, Speedscale, Racewall, Race Carbon Construction, Gen S	BI 6000 + WC Grinding	Nomex Featherlight Race	Atomic Pro Center Ski Selection, Flat Racing Tip (FRT)	

Redster S9 Carbon

Explosive power from unrivalled rebound

Our Innowave Core is crafted for strength and efficiency. Its unique wave pattern and material composition deliver dynamic rebound, so you experience unparalleled responsiveness and power transmission with every push.

Control and confidence at speed

The new Redster S9 Carbon comes with a more parallel sidecut that dials up steering control at speed. So, no matter how fast the conditions, you can push hard with total confidence.

Optimized tip for better balance and flow

Little details matter for racing – we've created a shorter, flatter and lighter ski tip, specially designed to enhance your swing balance and allow for a super smooth and fluid motion.



Key Technologies

Innowave Core, Flat Racing Tip, Race Carbon Construction

What's new?

The World Cup-approved construction from FW24 carries over unchanged, but the Redster design has been refreshed for the new season. It features the same size split – now streamlined to three lengths (175, 183, 191) instead of four – along with a shorter, flatter tip and a more parallel sidecut. Additionally, the ski now incorporates the innovative Innowave Core.

Good to know

The ultimate speed machine, designed to perform in all conditions. Available in Cold, Warm, and Uni versions – each tailored with specific adjustments and pressure zones to optimize performance, as detailed in the section about ski adjustment.

Weight Recommendation

Redster Skate	KG	LBS	KG	LBS	KG	LBS
Redster S9 Carbon	175		183		191	
ABSS00652 – UNI med + Shift RC SK	45 – 65	99 – 143	55 – 75	121 – 165	65 – 85	143 – 187
ABSS00656 – UNI hard + Shift RC SK	■	■	75 – 100	165 – 220	85 – 110	187 – 242
ABSS00658 – PLUS med + Shift RC SK	■	■	55 – 75	121 – 165	65 – 85	143 – 187
ABSS00654 – COLD med + Shift RC SK	■	■	55 – 75	121 – 165	65 – 85	143 – 187

Tech Specs

Product	Art. No.	Binding	Sizes (cm)	Weight (single pc./ Size)	Side cut (mm)	Constr.	Base	Core	Features	Price
Redster S9 Carbon	ABSS00656	Uni hard	183, 191	510g/	42/43/43	Race Carbon Construction	BI 6000 + WC Grinding	Innowave Core	Atomic Pro Center Ski Selection, Flat Racing Tip (FRT)	
	ABSS00652	Uni med	175, 183, 191	183cm						
	ABSS00654	Cold med	183, 191							
	ABSS00658	Plus med	183, 191							

Redster C9 Carbon

Perfect balance between grip and glide

Developed with World Cup athletes to achieve the ideal blend of top speed and powerful kick.

Ultra lightweight

Every gram counts—our construction and Innwave Core deliver a light, efficient feel.

Effortless handling

Optimized, shorter lengths and a refined race tip offer precision control and reduced weight.



Key Technologies

Innowave Core, Flat Racing Tip, Race Carbon Construction

What's new?

A redesigned, flatter tip cuts weight and enhances handling for a better race feel in the track and when switching tracks. The updated size split – now available in three lengths (186, 195, 204) – offers a more streamlined selection. Additionally, new wax zone markings make it easier to determine optimal wax length.

Good to know

Available in Cold, Warm, Uni, and Multi versions—each with tailored adjustments and pressure zones for top performance in any condition. Continuous refinements based on World Cup feedback ensure ever-improving speed and efficiency.

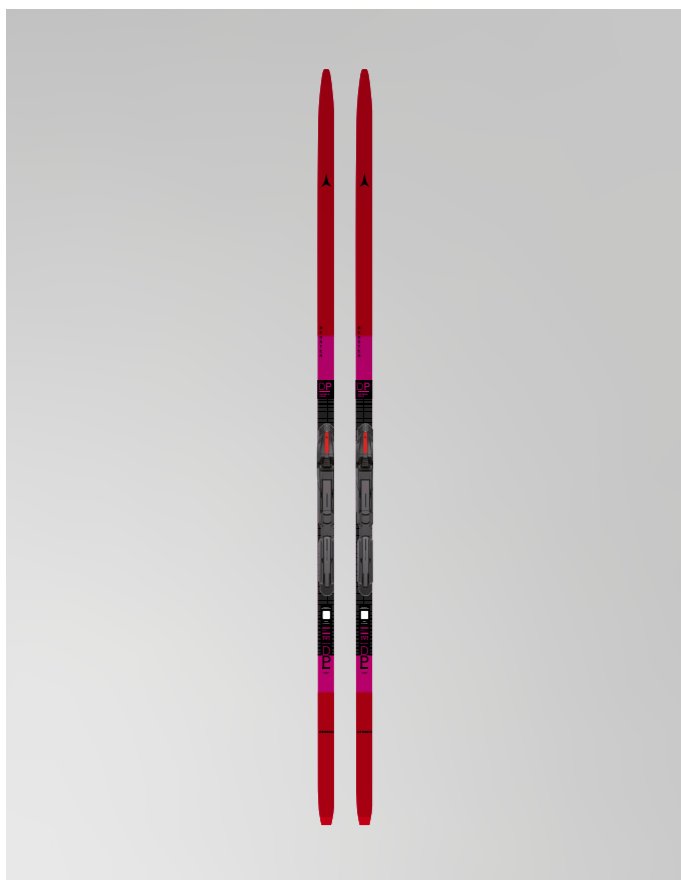
Weight Recommendation

Redster Classic	KG	LBS	KG	LBS	KG	LBS
Redster C9 Carbon	186		195		204	
ABSS00616 – UNI soft + Shift RC CL	■	■	45–55	99–121	65–75	143–165
ABSS00614 – UNI med + Shift RC CL	55–65	121–143	55–65	121–143	75–85	165–187
ABSS00612 – UNI hard + Shift RC CL	65–75	143–165	65–75	143–165	85–95	187–209
ABSS00610 – UNI xhard + Shift RC CL	■	■	75–90	165–198	95–110	209–243
ABSS00632 – COLD soft + Shift RC CL	■	■	45–55	88–110	65–75	143–165
ABSS00630 – COLD med + Shift RC CL	■	■	55–65	121–143	75–85	165–187
ABSS00628 – COLD hard + Shift RC CL	■	■	65–75	143–165	85–95	187–209
ABSS00622 – PLUS soft + Shift RC CL	■	■	45–55	88–110	65–75	143–165
ABSS00620 – PLUS med + Shift RC CL	■	■	55–65	121–143	75–85	165–187
ABSS00618 – PLUS hard + Shift RC CL	■	■	65–75	143–165	85–95	187–209
ABSS00626 – MULTI soft + Shift RC CL	■	■	45–55	88–110	65–75	143–165
ABSS00624 – MULTI med + Shift RC CL	■	■	55–65	121–143	75–85	165–187

Tech Specs

Product	Art. No.	Binding	Sizes (cm)	Weight single pc./ Size	Side cut (mm)	Constr.	Base	Core	Features	Price
Redster C9 Carbon	ABSS00610	Uni xhard	195, 204	490g/ 195cm	43/44/44	Race Carbon Construction	BI 6000 + WC Grinding	Innowave Core	Waxable	
	ABSS00612	Uni hard	186, 195, 204							
	ABSS00614	Uni med	186, 195, 204							
	ABSS00616	Uni soft	195, 204							
	ABSS00618	Plus hard	195, 204							
	ABSS00620	Plus med	195, 204							
	ABSS00622	Plus soft	195, 204							
	ABSS00624	Multi med	195, 204							
	ABSS00626	Multi soft	195, 204							
	ABSS00628	Cold hard	195, 204							
	ABSS00630	Cold med	195, 204							
	ABSS00632	Cold soft	195, 204							

Redster DP



Key Technologies

Innowave Core, Race Carbon Construction, Flat Racing Tip

What's new?

Updated design.

Good to know

Atomic Redster DP is our race ski specially designed for double poling. It's based on a skating ski construction, but we've moved the camber high-point forward, meaning more acceleration and speed for the best double-poling performance possible.

Weight Recommendation

Redster Classic	KG	LBS
Redster DP	191	
ABSS00634 - Shift RC CL	70-90	154-198

Tech Specs

Product	Art. No.	Binding	Sizes (cm)	Weight single pc./ Size	Side cut (mm)	Constr.	Base	Core	Grip	Features	Price
Redster DP	ABSS00634	Prolink Shift Race CL	191	520g/ 191cm	42/43/43	Race Carbon Construction	BI 6000 + WC Grinding	Innowave Core	Wax-able	Atomic Pro Center Ski Selection, Flat Racing Tip (FRT)	



Redster C9 Skintec



Key Technologies

Innowave Core, Skintec

What's new?

The Redster C9 Skintec carries over from FW24 with no changes. Its latest updates include the Innowave Core and an optimized thickness curve, delivering the perfect balance between kick and glide.

Good to know

The Redster C9 Skintec shares key Redster features with the C9 Carbon, but its construction is fine-tuned specifically for skin skiing.

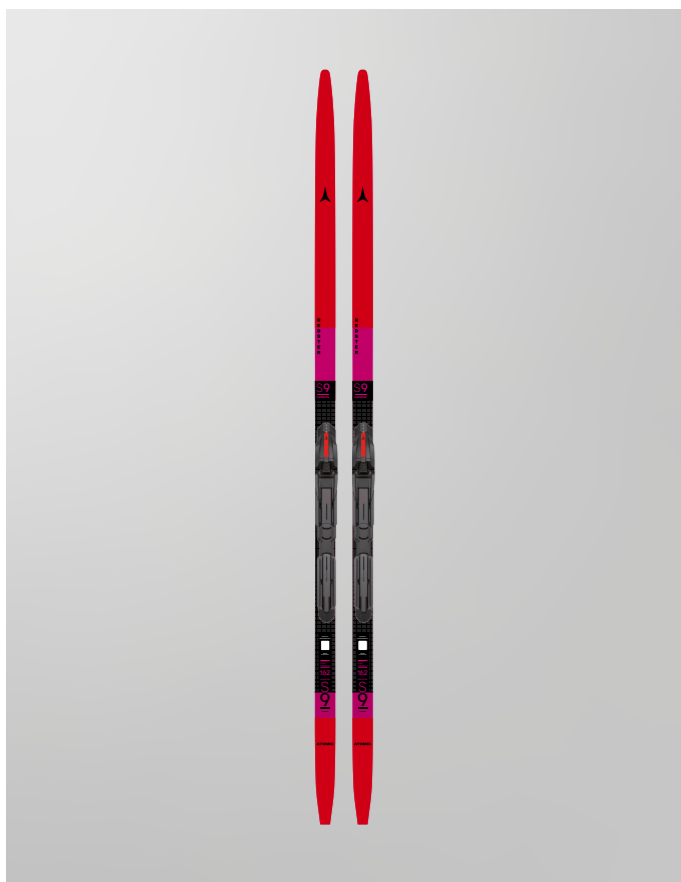
Weight Recommendation

Redster Classic	KG	LBS	KG	LBS	KG	LBS	KG	LBS	KG	LBS
Redster C9 Skintec	187		192		197		202		207	
ABSS00510 med + Shift RC CL	50-60	110-132	55-65	121-143	60-70	132-154	70-80	154-176	80-90	176-198
ABSS00508 hard + Shift RC CL	60-70	132-154	65-75	143-165	70-80	154-176	80-90	176-198	90-100	198-220
ABSS00512 Skintec xhard + Shift RCCL	■	■	■	■	■	■	■	■	■	100-115 220-253

Tech Specs

Product	Art. No.	Binding	Sizes (cm)	Weight single pc./ Size	Side cut (mm)	Constr.	Base	Core	Grip	Features	Price
Redster C9 Skintec	ABSS00512 hard ABSS00508 hard ABSS00510 med	Prolink Shift Race CL	207 187, 192, 197, 202, 207 187, 192, 197, 202, 207	560g/ 197cm	43/44/44	Race Carbon Costruc- tion	BI 6000 + WC Grinding	Innowave Core	Skintec	100% Mohair, Easy Skin Exchange	

Redster S9 Carbon JR



Key Technologies

Innowave Core, Race Carbon Junior Construction

What's new?

A fresh design update matching the World Cup athlete design combined with key construction advancements from FW24, including the Innowave Core.

Good to know

Designed specifically for junior skiers' weight and height, these skis use the same features as the adult World Cup version, such as the core and Atomic Pro Center selection. They also feature a bonded plate with moveable bindings, ensuring top-level performance.

Weight Recommendation

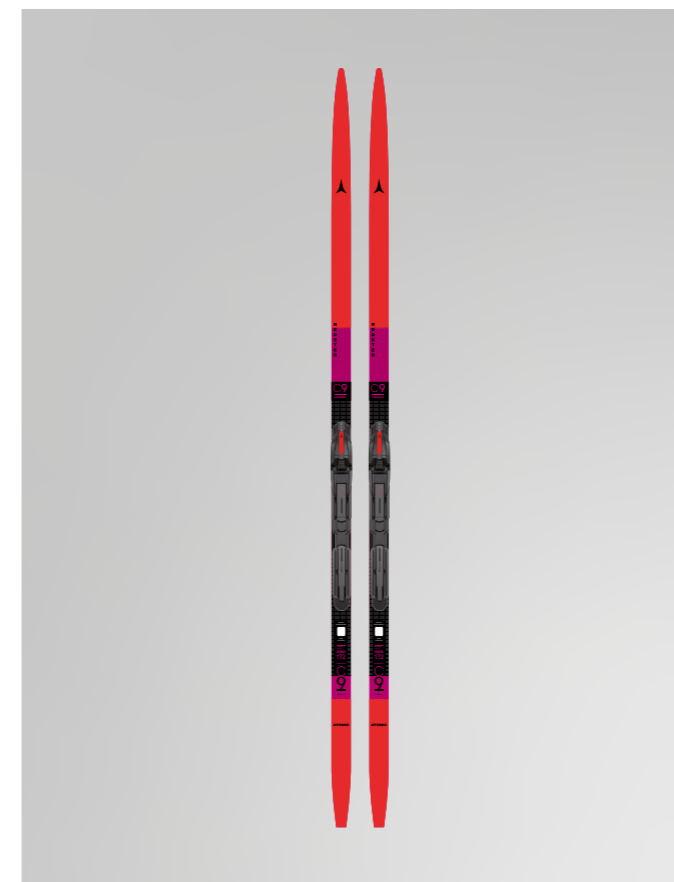
Redster Skate	KG	LBS	KG	LBS	KG	LBS	KG	LBS
Redster S9 Carbon Junior	155		162		169		176	
ABSS00662 + Shift SK	30-45	66-99	35-50	77-110	40-55	88-121	45-60	99-132

Tech Specs

Product	Art. No.	Binding	Sizes (cm)	Weight single pc./ Size	Side cut (mm)	Constr.	Base	Core	Features	Price
Redster S9 Carbon Junior	ABSS00662	Prolink Shift SK JR	155, 162, 169, 176	410g/ 162cm	44/43/44	Race Carbon Junior Construction	BI 6000 + WC Grinding	Innowave Core	Atomic Pro Center Ski Selection	



Redster C9 Carbon JR



Key Technologies

Innowave Core, Race Carbon Junior Construction

What's new?

A fresh design update matching the World Cup athlete design combined with key construction advancements from FW24, including the Innowave Core.

Good to know

Designed specifically for junior skiers' weight and height, these skis use the same features as the adult World Cup version, such as the core and Atomic Pro Center selection. They also feature a bonded plate with moveable bindings, ensuring top-level performance.

Weight Recommendation

Redster Classic	KG	LBS	KG	LBS	KG	LBS	KG	LBS	KG	LBS	KG	LBS	KG	LBS
Redster C9 Carbon Junior	157		162		167		172		177		182		187	
ABSS00664 + Shift CL	25-35	55-77	28-38	62-84	30-40	66-88	32-42	71-93	35-45	77-99	40-50	88-110	45-55	99-121

Tech Specs

Product	Art. No.	Binding	Sizes (cm)	Weight single pc./ Size	Side cut (mm)	Constr.	Base	Core	Features	Price
Redster S9 GEN S	ABSS00650 ABSS00648	hard Prolink Shift med Race SK	173, 183 173, 183	525g/ 183cm	47/40/47	Speedline, Speed-scale, Racewall, Race Carbon Construction, Gen S	BI 6000 + WC Grinding	Nomex Featherlight Race	Atomic Pro Center Ski Selection, Flat Racing Tip (FRT)	





Weight Recommendation

Tech
Specs

Nordic
Racing



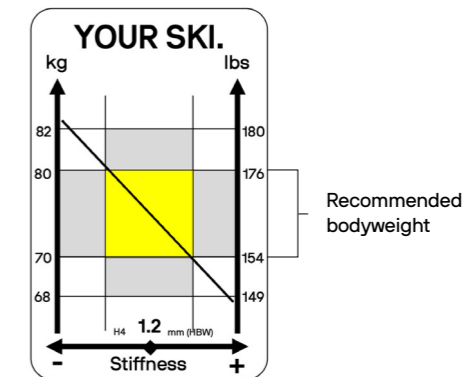
Each ski in our Redster range comes with a sticker displaying its unique characteristics, including the ideal weight range based on its specific length and flex. There are two types of stickers—one for Classic skis and one for Skate skis.

Classic

The Classic ski sticker features a color-coded system for different snow conditions: cold (blue ■), universal (yellow ■), and warm (red ■). For Skintec, the sticker is grey (■). The example shown is for a classic ski with a recommended skier weight of 70-80 kg (154-176 lbs). Skiers on the lower end of the range may experience better grip, while those on the higher end may achieve more glide.

Optimal
+5 -5 kg around targeted bodyweight

Example
~ 80 kg = better grip
~ 75 kg = perfect balance between grip and glide
~ 70 kg = increased glide

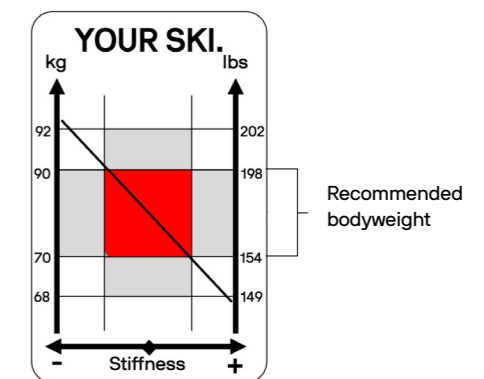


Skate

The Skate ski sticker provides the recommended weight range for that specific ski. The example shown is for a skating ski suitable for skiers between 70 - 90 kg (154 - 198 lbs).

Optimal
+10 -10 kg around targeted bodyweight

Example
~ 90 kg = more comfort and stability
~ 80 kg = perfect balance between stability and acceleration
~ 70kg = increased rebound, fast conditions



Redster C9 Carbon

World Cup acceleration

The Carbon Power Base, a full-length carbon outsole that wraps the heel and sole, delivers 100% power transmission – taking acceleration and stability to the next level.

Precision fit and comfort

A low-cut inner boot, targeted ankle padding, and a refined lacing system provide a secure, comfortable fit with optimal heel hold for enhanced control and performance.

Explosive and responsive kick

A refined midsole flex and secure foothold ensure maximum power transfer, delivering an efficient, dynamic kick with every stride.



Key Technologies

Race Quicklace, Carbon Power Base CL

What's new?

The Redster C9 Carbon has been fully updated to enhance fit, comfort, and performance. A thinner, lighter inner boot now provides a running shoe-like feel, while added ankle padding ensures optimal heel hold. The new lacing system features a Race Quicklace and updated materials, delivering a better top-to-bottom foothold and pressure distribution. The midsole features a slightly softer flex, and the upper has been changed to a one-piece upper gaiter construction.

Good to know

Developed in close collaboration with World Cup athletes like Anne Kjersti Kalvå and Simen Krüger, the final version was refined through more than 10 rounds of prototypes and athlete feedback to achieve the best possible performance.



Athlete:

"This new classic boot is incredible. It fits like a sock but provides the stability you need for a powerful kick and smooth turns. I've been part of the development process for this boot, so if you don't like it – call me! Seriously, it's been such an interesting journey – feedback, testing, improvements, and more feedback. The team behind this has done an amazing job! The final product is the best classic boot I've ever tested."

Anne
Kjersti Kalvå



Tech Specs

Product	Art. No.	Weight/Boot (Sample Size)	Sizes (UK)	Fit/ Last	Flex	Outsole	Lacing	Heel	Protection	Inner Boot Construction	Price
Redster C9 Carbon	A15008010	320g/UK8	3.5 – 12.5	Race Fit	Classic Flex	Prolink Racing Split Sole CL	3D Race Lacing System, Race Quicklace	Carbon Pow- er Base CL	Lace Cover with Central Zip	Low Cut, Ultralight Inner Boot	

Redster SC9 Carbon

The best of both worlds

Designed for skiathlons, the Redster SC9 Carbon delivers the ideal blend of skating support and classic flex, ensuring top performance in both disciplines.

Carbon power & stability

The Carbon Power Base extends along the full length of the boot, providing maximum power transfer and stability.

Precision fit

A snug, race-ready fit with targeted heel padding and a streamlined one-piece upper construction keeps your foot securely in place.



Key Technologies

Carbon Cuff, Race Quicklace, Carbon Power Base CL, Ultralight Inner Boot

What's new?

Everything! The SC9 Carbon is a new addition to the range, purpose-built for skiathlons. It features a dedicated Carbon Power Base, engineered to provide exceptional power transmission and stability while maintaining a smooth front flex for classic skiing. The inner construction mirrors that of our classic boots, offering a precise fit, secure foothold, and enhanced comfort—perfect for high-performance racing.

Good to know

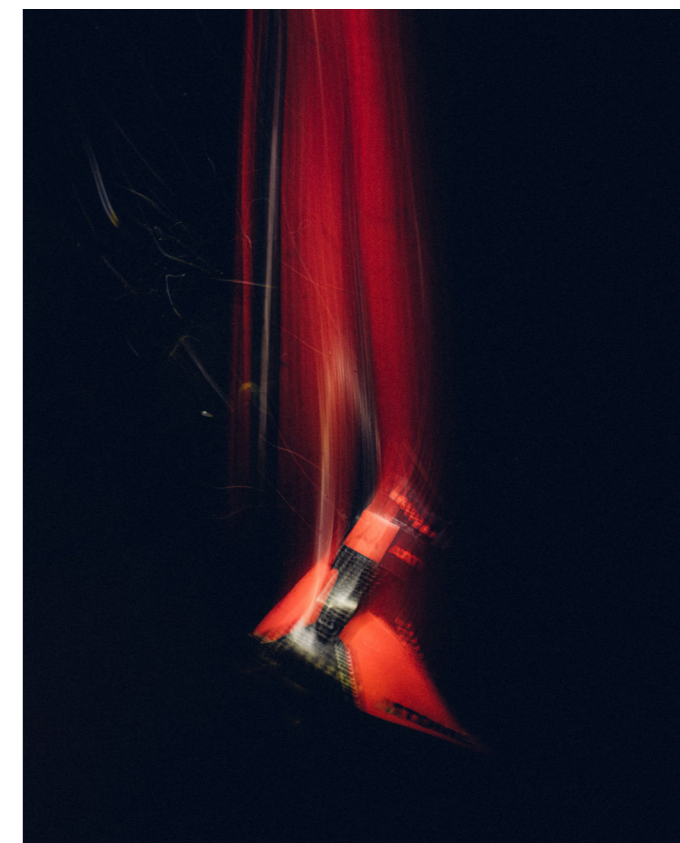
The Redster SC9 Carbon has been created for skiathlons. However, it's also a great choice for classic competitions—especially sprints, on icy tracks, or courses with lots of downhill where extra support is crucial. It's even favored by athletes for double-pole races, offering the perfect balance of stability and performance.



Athlete:

"The new Atomic Skiathlon boots are the perfect balance of performance and comfort. They're great for days when conditions are challenging, and you need extra support in classic. I especially like them on tracks with a lot of double poling. Testing the new boots was a great experience, and I loved discovering the little details that make them even better."

Ansgar Evensen



Tech Specs

Product	Art. No.	Weight/ Boot (Sample Size)	Sizes (UK)	Fit/ Last	Flex	Outsole	Lacing	Cuff	Heel	Protection	Inner Boot Construction	Price
Redster SC9 Carbon	A15008000	450g/UK8	5-12.5	Race Fit	Combi Flex	Prolink Racing Split Sole CL	3D Race Lacing System, Race Quicklace	Carbon Cuff	Carbon Power Base CL, 3D Heel Padding	Lace Cover with Central Zip, WaterProof Zip Lace Cover	Low Cut, Ultralight Inner Boot	

Redster S9 Carbon



Key Technologies

Carbon Cuff, Prolink Racing Split Sole SK, Carbon Power Base SK

What's new?

This model is a carry-over. Stay tuned for what's next.

Good to know

The Redster S9 Carbon is all about stability, power transmission, and the precision of carbon construction. A precise fit is key for race performance, but every foot is unique. The Redster S9 Carbon is designed with just enough room for professional bootfitting, allowing for precise adjustments in key areas like the toe box and medial section. The result? A truly personalized fit that can make all the difference on race day.

Tech Specs

Product	Art. No.	Weight/Boot (Sample Size)	Sizes (UK)	Fit/Last	Flex	Outsole	Cuff	Heel	Inner Boot Construction	Price
Redster S9 Carbon	A15007790	460g/UK8	4.5 - 12	Race Fit	Skating Flex	Prolink Racing Split Sole SK	Carbon Cuff	Carbon Power Base SK	Low Cut	



Redster SC9 JR



Key Technologies

Easy Step-In, External 3D Heel Counter, Junior Fit, Quicklace

What's new?

Everything. The Redster SC9 JR is a brand-new addition to our junior range, designed to bring a higher level of performance to young athletes.

Good to know

With a look and feel inspired by the World Cup, the Redster SC9 JR brings pro-level performance to young athletes. Durable and easy to use, it makes gearing up simple. Designed for both classic and skating, it offers the perfect balance of stability needed for skating and the flex required for classic skiing, while its water-resistant construction keeps feet protected.

Tech Specs

Product	Art. No.	Weight/Boot (Sample Size)	Sizes (UK)	Fit/Last	Flex	Outsole	Lacing	Cuff	Heel	Protection	Inner Boot Construction	Price
Redster SC9 JR	A15008020	500g/UK8	3.5 - 8	Junior Fit	Combi Flex	Prolink Race CL	Quicklace	Rotative Sport Cuff	External 3D Heel Counter	Lace Cover with Central Zip	Mid Cut, Easy Step-In	



Prolink Shift Bindings

Atomic Prolink Shift Bindings are moveable bindings that let you adjust for more grip or glide as you go. Adjusting the binding position allows for fine-tuning based on snow conditions and preferences, optimizing both glide and grip for classic and skating.



Classic Benefits

Moving the binding **backward** (-2.25, -1.5, -0.75) raises the ski camber, lifting the kick wax off the snow to enhance glide. Moving it **forward** (+0.75, +1.5) lowers the ski camber, increasing contact between the kick wax and the snow for improved grip.

Skating Benefits

Moving the binding **backward** (-2.25, -1.5, -0.75) raises the ski camber, reducing pressure on the front of the ski for effortless acceleration and easy skiing, especially in slow snow conditions. Moving it **forward** (+0.75, +1.5) increases pressure on the front of the ski, providing better grip and stability - ideal for icy and compact conditions.

Good to know: Our athletes typically have the bindings set on -1 as their go-to, standard skating setting.

Bonded Prolink Shift Plate

The one-piece Shift plate is bonded to the ski, which results in the best power transmission and stability possible. Get the maximum performance from the power you put in.



Prolink Shift Race →



■ Prolink Shift Race SK ^{carry over}
AH5007190



■ Prolink Shift Race CL ^{carry over}
AH5007180

Prolink Shift JR →



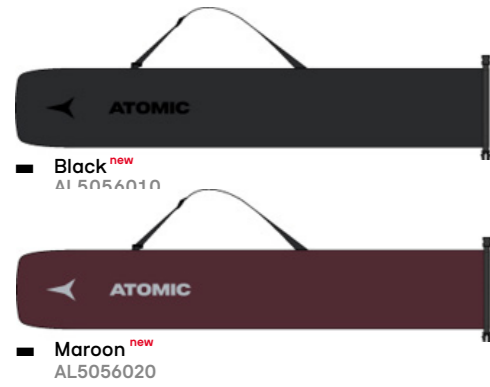
■ Prolink Shift JR SK ^{carry over}
AH5007250



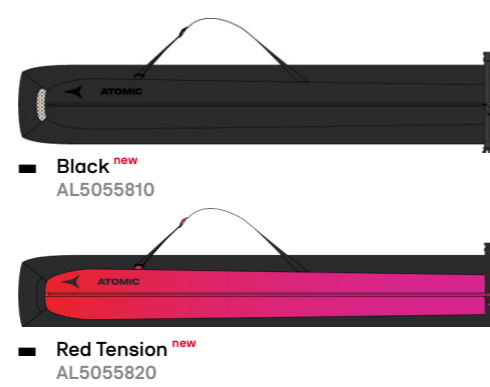
■ Prolink Shift JR CL ^{carry over}
AH5007240

Product	Art. No.	Wedge Angle	Weight (/Bind.)	System	Axe Tech.	Power Transmission	Opening/Closing	Flex	Shift Technology	Price
Prolink Shift Race SK	AH5007190	0,73°	100g	Prolink	1-Axis	Carbon Guideridge	Carbon Race Lever	115	Shift Race Lock, 6-Position Adjustment	
Prolink Shift Race CL	AH5007180	0,73°	100g	Prolink	1-Axis	Carbon Guideridge	Carbon Race Lever	85	Shift Race Lock, 6-Position Adjustment	
Prolink Shift JR CL	AH5007240	0,73°	106g	Prolink	1-Axis	Low Boot-Binding Interface	Ergonomic Lever	Junior	Moveable Adjustment, Shift Lock, 6-Position Adjustment	
Prolink Shift JR SK	AH5007250	0,73°	106g	Prolink	1-Axis	Low Boot-Binding Interface	Ergonomic Lever	Junior	Moveable Adjustment, Shift Lock, 6-Position Adjustment	

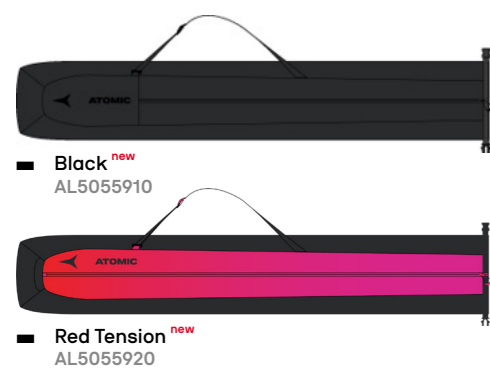
Nordic A Sleeve



Nordic Ski Bag 3 Pairs



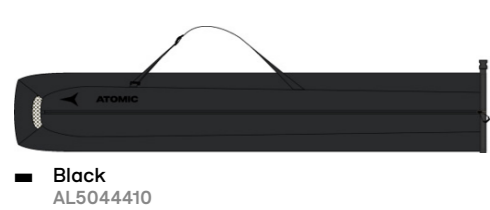
Nordic Ski Sleeve



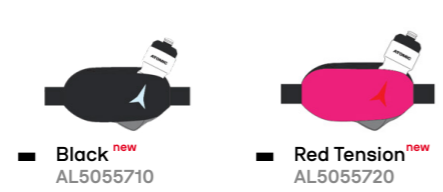
Nordic Thermo Bottle Belt



Nordic Ski Bag 10 Pairs



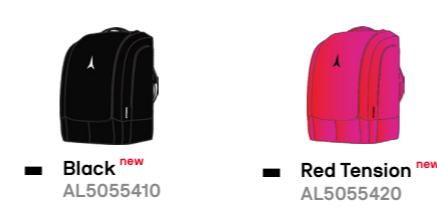
Hydration Belt



Product	Art. No.	Color	Dimensions (HxLxW) (cm)	Weight	Fabric	Features	Price
Nordic A Sleeve	AL5056010	Black	223x19cm	310g	PVC free, Water/Stain Resistant Fabric		
	AL5056020	Maroon					
Nordic Ski Sleeve	AL5055910	Black	223x19cm	405g	Water/Stain Resistant Fabric		
	AL5055920	Red Tension					
Nordic Ski Bag 3 Pairs	AL5055810	Black	218x19x14cm	950g	Water/Stain Resistant Fabric	Easy Cleaning Tarpaulin Lining	
	AL5055820	Red Tension					
Nordic Ski Bag 10 Pairs	AL5044410	Black	215x25x40cm	2500g	Tarpaulin Lining, 600D Poly with PU Coating, 150D PE with PU*2 Coating, PVC free	Durable	
Nordic Thermo Bottle Belt	AL5050210	Black/Grey	50x25x12cm	280g	Lite Ripstop PA with TPU Coating	Lightweight, Bottle with Push/Pull Opening	
	AL5050230	Red Tension					
Hydration Belt	AL5055710	Black	40x13x8cm	130g	Lite Ripstop PA with TPU Coating	Lightweight, Bottle with Push/Pull Opening, Atomic Water Bottle	
	AL5055720	Red Tension					



Redster Pack 60L



Trolley 90L



Cabin Trolley



Product	Art. No.	Color	Vol.	Dimensions HxLxW	Weight	Fabric	Construction	Features	Price
Redster Pack 60L	AL5055410	Black	36x32x54cm	1300g	PVC free, Water/Stain Resistant Fabric, Water- and Stain-resistant Coating	Main Compartment for Boots & Helmet, Thermo Insulation for Bottles, Easy-Access Main Compartment, Chest Strap, Top Handle, Adjustable Hip Belt, Adjustable Shoulder Straps, Lined Goggle Compartment, Padded Shoulder Straps, Boot Separator, Ventilation Grid, Fully Padded, External Pockets, Internal Pockets, Big Zipper Opening, Internal Accessory Pocket	Durable, Easy Cleaning Tarpaulin Lining, Name Tag Print		
	AL5055420	Red Tension							
Trolley 90L	AL5047420	Black/Black	90L	74x40x29cm	4000g	600D PE with PU Coating, 500D PE with PU Coating, 150D PE with PU*2 Coating, PVC free, Water- and Stain-resistant	Easy-Access Main Compartment, Retractable Top Handle, Padded Handles, Front Accessory Pocket, Internal Pockets	Durable, 365 Days Usage, Name Card Template, Silent Big Wheels (8.5 cm)	
	AL5047410	Red/Rio Red							
Cabin Trolley	AL5047520	Black/Black	40L	52x33x20cm	2200g	600D PE with PU Coating, 500D PE with PU*2 Coating, PVC free, Water- & Stain-resistant	Internal Document Sleeve, Easy-Access Main Compartment, Retractable Top Handle, Mesh Pocket Inside Lid (Laptop Compatible), Padded Handles, Front Accessory Pocket	Durable, 365 Days Usage, Name Card Template, Silent Big Wheels (8.5 cm)	

Ski Fix 10 PCS



Black ^{new}
AL5056510

Redster Ski Fix 10 PCS



Black ^{new}
AL5056410

Nordic Redster Ski Fix 10 PCS



Black ^{carry over}
AL5046210

Overboot



Black/Black ^{carry over}
AL5047520



Red ^{new}
AL5056520

Nordic Ski Fix 10 PCS



Black ^{carry over}
AL5049310

Product	Art. No.	Color	Dimensions (HxLxW) (cm)	Weight
Ski Fix 10 PCS	AL5056510 AL5056520	Black Red	45,5x4,5x1cm	28g
Redster Ski Fix 10 PCS	AL5056410	Black	43x5,7x1cm	28g
Nordic Redster Ski Fix 10 PCS	AL5046210	Black	14x5.5x3.5	10g
Nordic Ski Fix 10 PCS	AL5049310	Black	26x4.5x1	6g
Redster Overboot	AI5007940	Black Red	Sizes: 4, 5, 5.5, 6.5, 7, 8, 8.5, 9.5, 10, 11, 12	

Poles



Redster WC QRS Red Tension AJ5005904 ^{lifted}



Redster JR Red Tension AJ5005910 ^{lifted}

Product	Art. No.	Color	Sizes (cm)	Shaft	Grip	Strap	Basket	Tip	Weight	Price
Redster WC QRS	AJ5005904	Red Tension	140, 150, 155, 160, 165, 170, 180	100% Carbon WC	QRS - Quick Release System, QRS Nordic Cork Grip (2K)	Power Strap WC	Racing Basket Size M	Wolfram Tip	125g/150cm	
Redster JR	AJ5005910	Red Tension	80, 85, 90, 95, 100, 105, 110, 115, 120, 125	3* Aluminium Pole Technology	Touring EVA Grip (2K)	Power Strap Lite	Touring Basket Size S	Steel Tip	190g/115cm	





The Atomic Family

At Atomic, we believe in working closely with every athlete on our racing roster, building strong relationships to truly understand their needs. This close collaboration helps us fine-tune our products to the highest level while ensuring our athletes have the best gear to perform at their peak. Through dedicated local racing programs that provide a high level of support, we focus on developing talent from an early age and growing together. Athletes like the Weng sisters and Simen Krüger, who have been with Atomic since their junior years, are proof of this long-term commitment—rising from promising young racers to World Cup winners and Olympic champions.



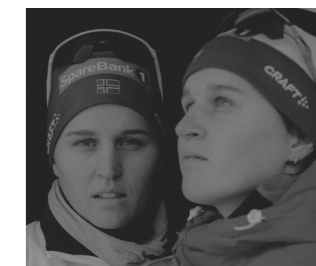
01 Mika Vermeulen



02 Julia Kern



03 Janosch Brugger



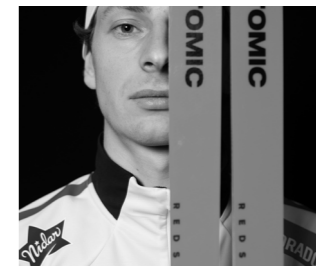
04 Tiril & Lotta Weng



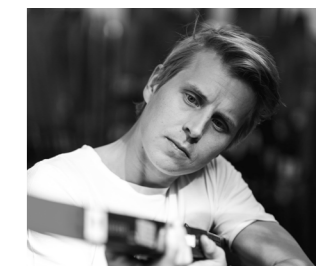
05 Victoria Carl



06 Johanna Hagström



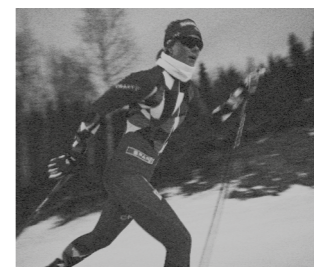
07 Ansgar Evensen



08 Simen Hegstad Krüger



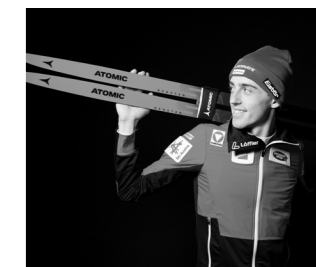
09 Hugo Lapalus



10 Anne Kjersti Kalvå



11 Kristin Fosnæs



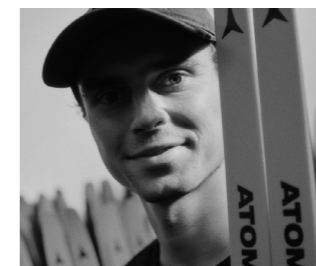
12 Stefan Rettenecker



13 Cyril Fähndrich



14 Simon Eder



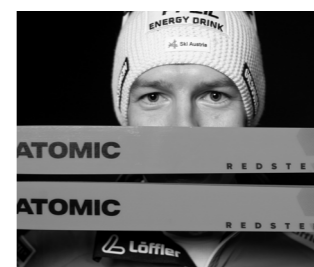
15 Vinzenz Geiger



16 Ville Ahonen



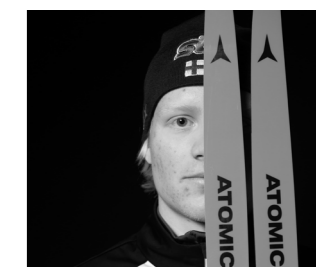
17 Manuel Faisst



18 Franz Josef Rehr



19 Remi Bourdin



20 Eero Rantala